

NC-SARA Updates & Discussion

SREB Regional Steering Committee Meeting
June 13, 2024

Marianne Boeke, Ph.D.

President

mboeke@nc-sara.org

Angela H. Lee

Senior Director, State Partnerships & Engagement

alee@nc-sara.org



Senior Director, State Partnerships & Engagement

Quick Introduction

Role, Goals, and Interaction with SPEs





ANGELA H. LEE

Senior Director,
State Partnerships &
Engagement



RELEVANT EXPERIENCE

- Executive Director, DC HELC
- DC SPE (8 years),
- RSC for 10 years; S SARA RSC Chair (4 years)
- NC SARA Board Member (3 years) / Policy Chair



EDUCATION

- MSW, Howard University
- BSW, Temple University
- Professional Event Management Certification, George Washington University



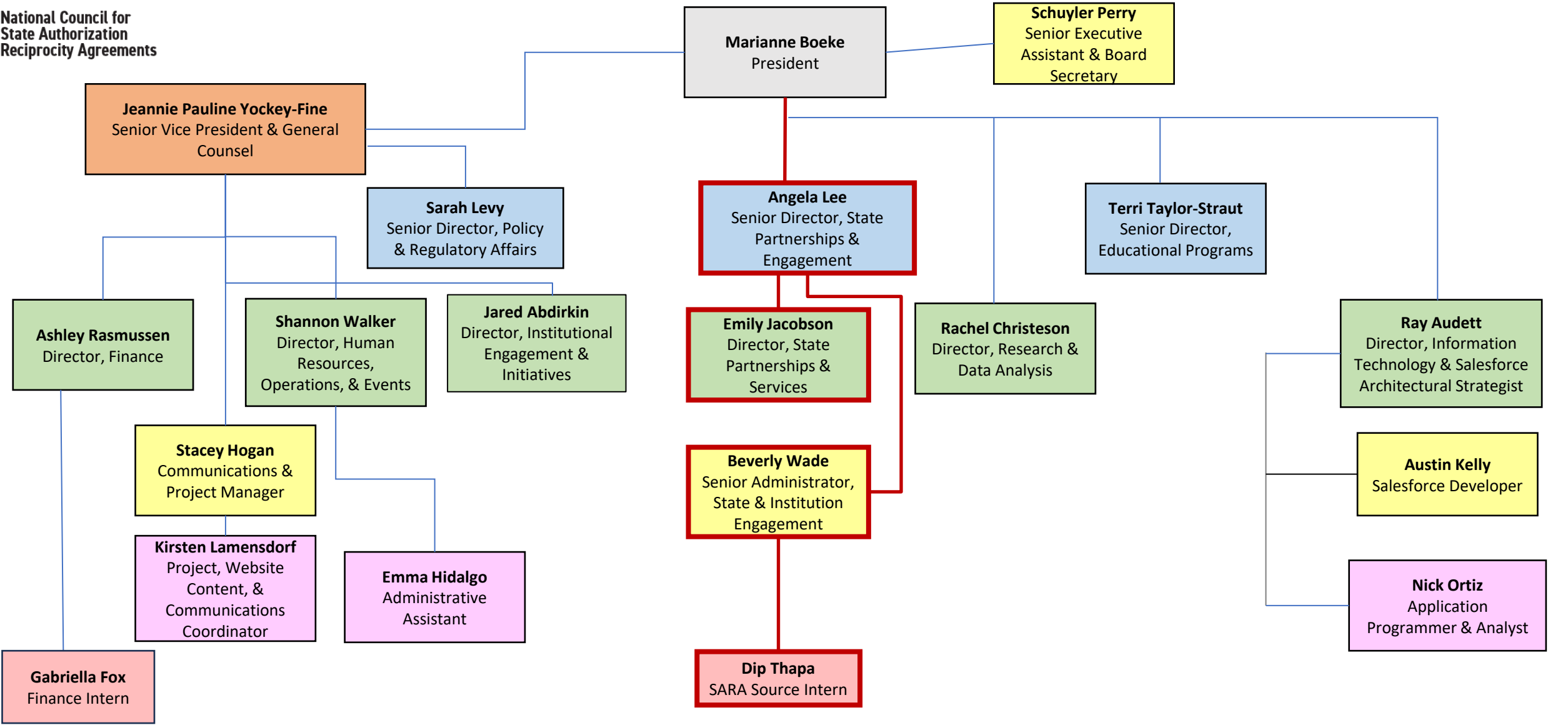
INTERESTS

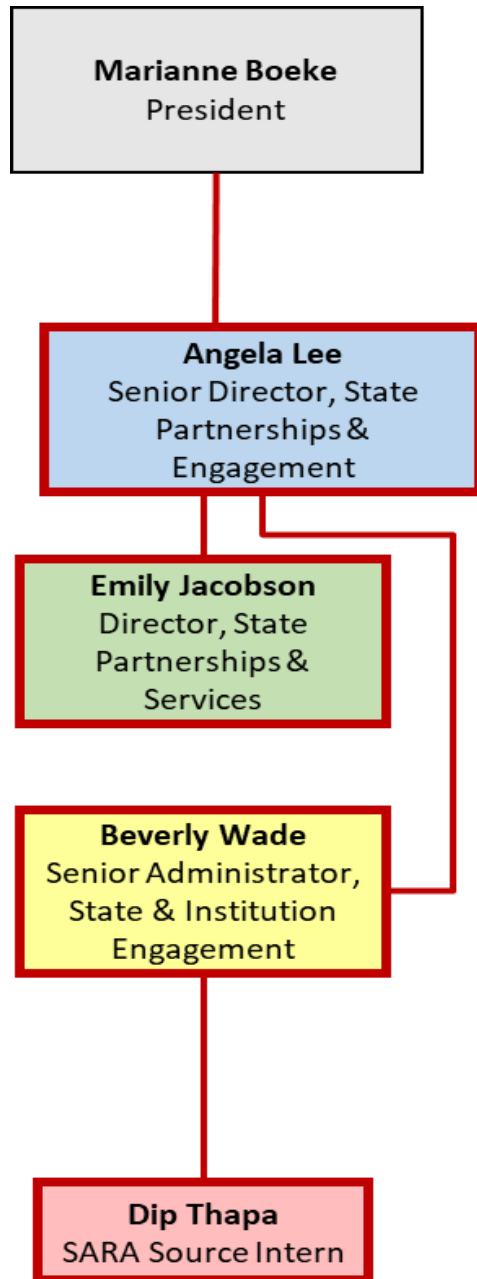
- Volunteer work
- Arts & crafts
- Pet Fish
- TV series about first responders



PERSONAL

- Married to college sweetheart
- 2 daughters





Senior Director for State Partnerships and Engagement

This position leads NC-SARA's activities, services, and operations focused on engaging State Portal Entities (SPEs) and institutions within the SARA community. Works with regional compact partners, SPEs, and institutions to ensure collaboration and transparency. Provides strategic input and direction into policy considerations and corresponding processes.

STATE PARTNERSHIPS & ENGAGEMENT TEAM'S WORK



Questions?





NC-SARA Updates

NC-SARA - About

NC-SARA supports, facilitates, and serves the regional compacts, the regional steering committees, the State Portal Entities, and SARA participating institutions.

- Committed to serving the SARA community
- Culture of care and service

Guiding Principles:

- Collaboration
- Collegiality
- Communication
- Transparency



NC-SARA Core Work

1. Support the board, board committees, and board working groups.
2. Support the regional compacts, regional steering committees (RSCs), State Portal Entities (SPEs), and SARA-participating institutions.
3. Facilitate, with the regional compacts and RSCs, the SARA Policy Modification Process.
4. Monitor and facilitate the SARA community's response to federal and state regulatory and policy changes that may impact SARA.
5. Conduct SARA research and data work (analyze and share data from SPEs and SARA-participating institutions).
6. Improve internal operations.



Current Areas of Work



- New Staff Onboarding
- Negotiated Rulemaking – SARA Call to Action Update
- Board Updates – Board Member Nominations
- Regional Compacts - Working Group on Institutional Closures
- Data Reporting – Closing June 15
- Policy & Fee Changes Effective July 1
- Administrative Forms (e-forms)



Future Areas of Work

- SARA Policy Modification Process Enhancements
- CSV upload feature for data reporting
A CSV file is a text file that has a specific format which allows data to be saved in a table structured format
- SARA Institutional Application
- Enhanced access for institutional contacts
- Review the NC-SARA Mission Statement, Vision, and Values



IMPORTANT DATES

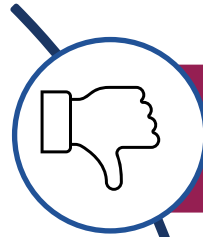
What	When
Institution Data Reporting submission deadline	June 15
NC-SARA Board Nominations deadline	July 10
Student Complaint Reporting (SPEs) submission deadline	July 11
State and Territory Mini-Grant Applications deadline	July 15
10 th Anniversary Institution Webinar @12 PM MT	July 17
SPE Conference Registration deadline	August 4
SPE Annual Conference	September 11-12



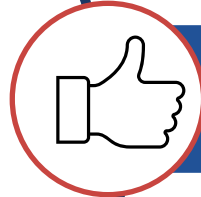
Questions?



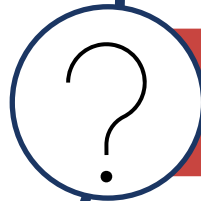
RSC/SPE FEEDBACK



What isn't going well?



What is going well?



What can be improved?



What might we try next?

Thank you!

For questions please email:
info@nc-sara.org



<https://www.linkedin.com/company/nc-sara>



National Council for
State Authorization
Reciprocity Agreements

MHEC • NEBHE • SREB • WICHE